

Synergy Industries is proud to introduce our new quality line-up of Wireline products. Setting Tools available: The SI-10, SI 20 and the SI Compact.

The Synergy Setting Tools are machined using quality materials and all machining follows strict guidelines set by our ISO 9001 certification standards. Each and every part is inspected 100% and is checked using specially ground gauges to ensure perfect assembly every time, no matter where.

All material certs, inspection data and Certificates of Conformance are kept on file for 5 years. Every piece of material that is supplied by Synergy Industries has 100% traceability and it can be tracked from the field all the way back to the mill that supplied it.

DIMENSIONS AND RATINGS

Max Temp:	400° o-rings rated 250°	Max Hydrostatic	15,000psi
Stroke:	10.00in	Min Csg/Tbg ID:	4.500in
Length with firing head:			40.25in
Weight with firing head:			62.00lbs
Length without firing head:			32.25in
Weight without firing head:			47.00lbs
Maximum Setting Force:			55,000lbs

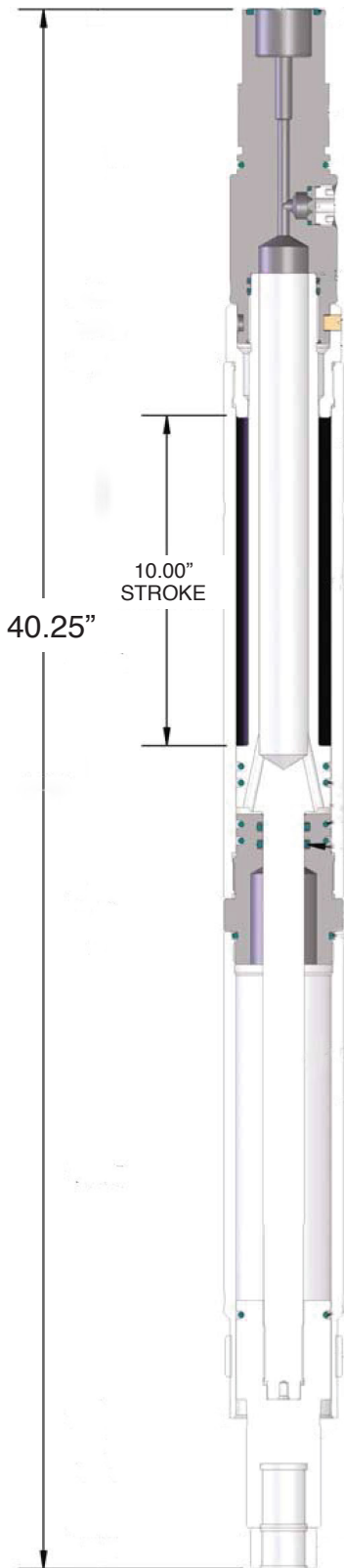
*High Temperature O-Ring Kits available for well temperatures above 250° Fahrenheit.

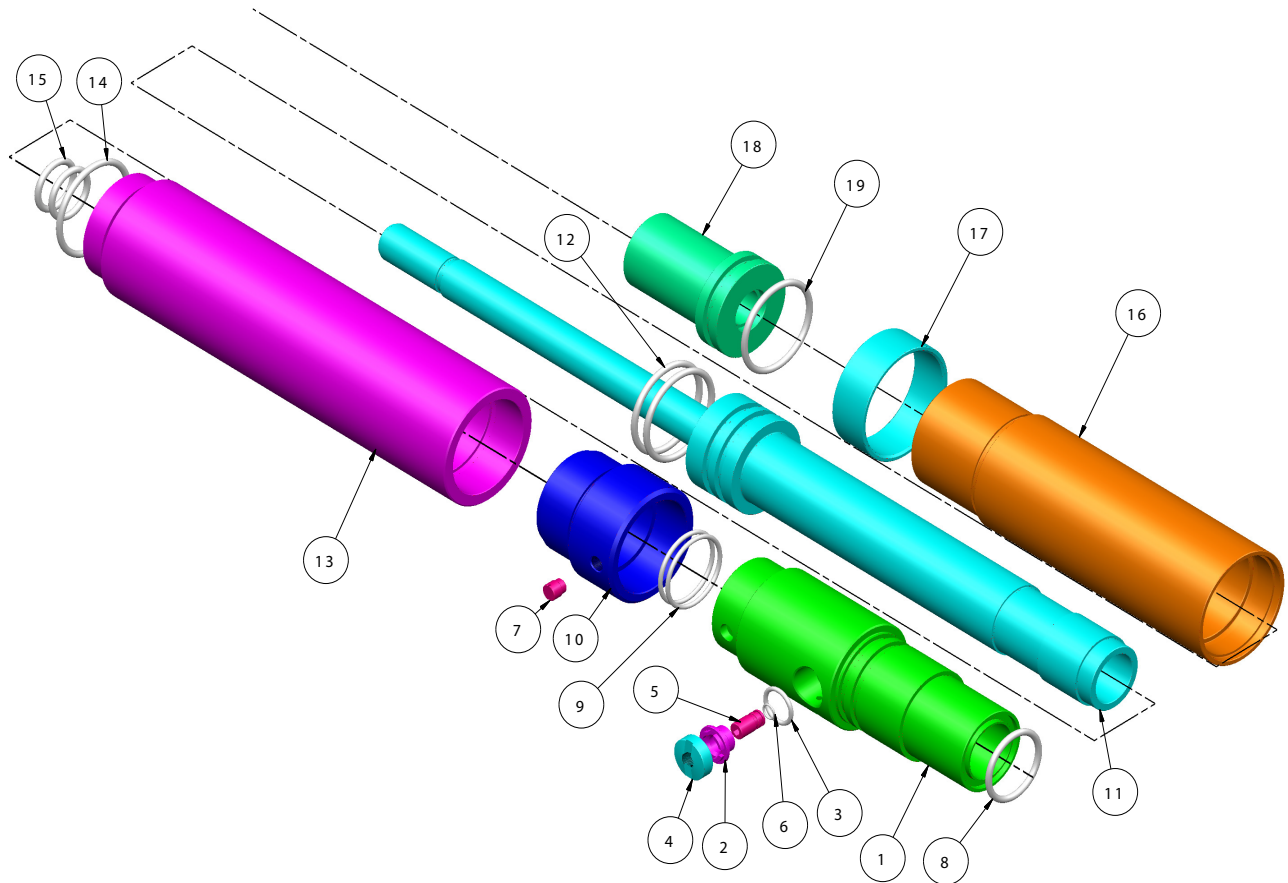
BOREHOLE CONDITIONS

Borehole Fluids:	<input checked="" type="checkbox"/> Salt <input checked="" type="checkbox"/> Fresh <input checked="" type="checkbox"/> Oil <input checked="" type="checkbox"/> Air
Recommended Max. Logging Speed:	30ft/mn
Tool Positioning:	<input type="checkbox"/> Centralized <input type="checkbox"/> Eccentralized
Max. speed in well w/ plug/retainer attached:	200ft/mn

MANUFACTURERS STATEMENT

- Machined under strict ISO 9001 standards
- Custom ground thread and Go/No Go Gauges
- 100% inspection required
- All material certification, inspection data, and Conformance Certifications are kept on file for 5 years





Part Number	Item Number	QTY	Description	Part Number	Item Number	QTY	Description
SIST350-000	000-2	N/A	Shorty Assembly	SIST350-010	010	1	Shear Sleeve
SIST350-001	001	1	Firing Head	SIST350-011	011	1	Top Piston Assembly
SIST350-002	002	1	Bleeder Valve Insert	SIST350-024	012	2	Top Piston O-Ring
SIST350-019	003	1	Bleeder Valve Insert O-Ring	SIST350-013	013	1	Top Cylinder
SIST350-004	004	1	Bleeder Valve Threaded Cap	SIST350-025	014	1	Top Cylinder O-Ring External
SIST350-005	005	1	Bleeder Valve Screw	SIST350-026	015	2	Top Cylinder O-Ring Internal
SIST350-020	006	1	Bleeder Valve Screw O-Ring	SIST350-016	016	1	Bottom Cylinder
SIST350-021	007	1	Shear Screw	SIST350-017	017	1	Lock Ring
SIST350-022	008	1	Firing Head O-Ring External	SIST350-018	018	1	Bottom Piston
SIST350-023	009	2	Firing Head O-Ring Internal	SIST350-027	019	1	Bottom Piston O-Ring