

The Synergy Setting Tools are machined using quality materials and all machining follows strict guidelines set by our ISO 9001 certification standards. Each and every part is inspected 100% and is checked using specially ground gauges to ensure perfect assembly every time, no matter where.

All material certs, inspection data and Certificates of Conformance are kept on file for 5 years. Every piece of material that is supplied by Synergy Industries has 100% traceability and it can be tracked from the field all the way back to the mill that supplied it.

Synergy Industries is proud to introduce our new quality line-up of Wireline products. Setting Tools available: The SI-10, SI 20 and the SI Compact.

DIMENSIONS AND RATINGS

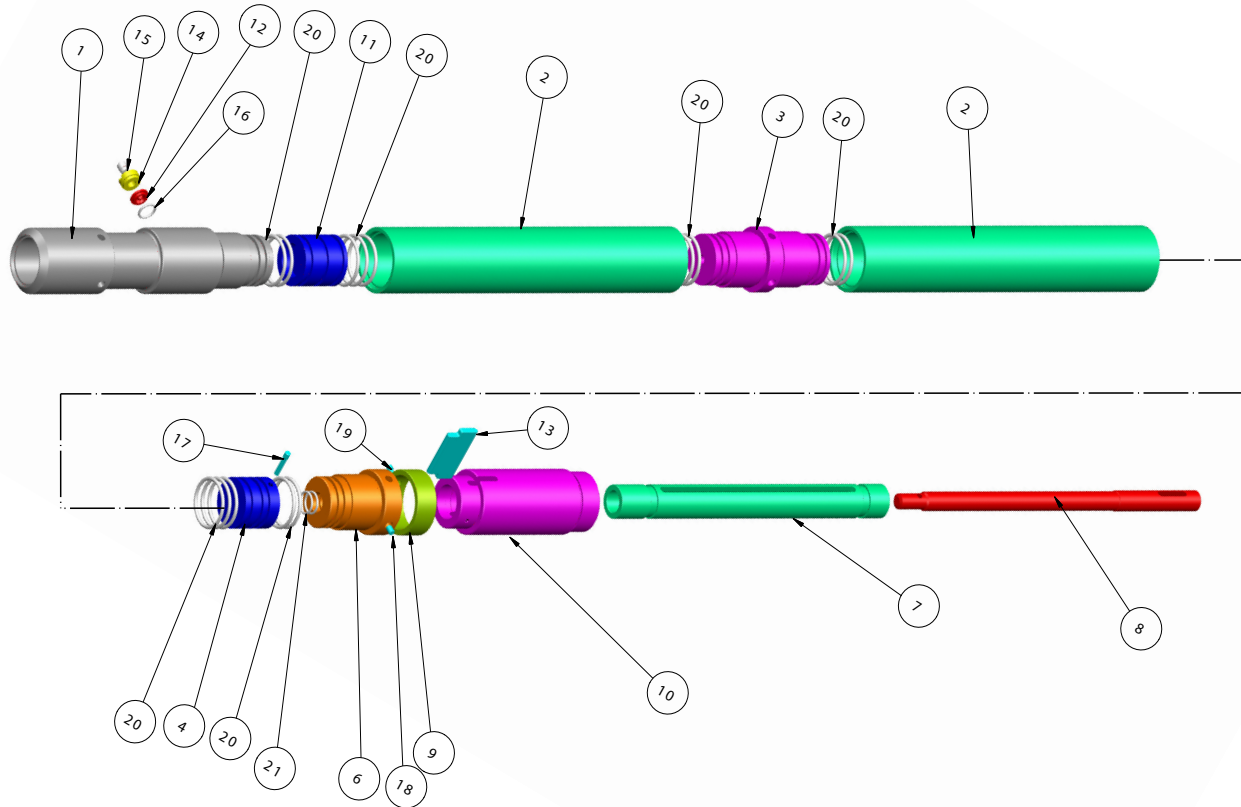
Max Temp:	400°	Max Press:	15,000 lbs.
Max OD:	3.8 in.	Min Csg/Tbg ID:	5.0 in.
Length:	74.5 in.	Max Csg/Tbg ID:	N/A
		Length with firing head:	81.84 in.
		Weight w/o firing head:	148.00 lbs.
		Maximum Setting Force:	55,000 lbs.

BOREHOLE CONDITIONS

Borehole Fluids:	<input checked="" type="checkbox"/> Salt <input checked="" type="checkbox"/> Fresh <input checked="" type="checkbox"/> Oil <input checked="" type="checkbox"/> Air
Recommended Max. Loggin Speed:	30ft/mn
Tool Positioning:	<input type="checkbox"/> Centralized <input type="checkbox"/> Eccentralized
Max. speed in well w/ plug/retainer attached:	200ft/mn

MANUFACTURERS STATEMENT

- Machined under strict ISO 9001 standards
- Custom ground thread and Go/No Go Gauges
- 100% inspection required
- All material certification, inspection data, and Conformance Certifications are kept on file for 5 years
- Synergy Industries promotes 100% serialized component traceability



PART NUMBER	NO	QTY	ITEM	REV	SHT	FINISHED SIZE	MATERIAL	HT	LVL	ORDER SIZE
SIST384-000			SIST384 ASSEMBLY DRAWING EXPLODED		1					
SIST384-001	1	1	Pressure Chamber with Bleeder Valve	4	2	3.840 DIA. X 17.188	STEEL 4140	RC-28	10	4.0 X 17.5
SIST384-002	2	1	Cylinder A	4	3	3.840 DIA. X 21.5	STEEL 4140	RC-32	11	4.0 X 21.8
SIST384-003	3	1	Cylinder Connection	4	4	3.812 DIA. X 8.375	STEEL 4140	RC-28	12	4.0 X 8.75
SIST384-004	4	1	Lower Piston	4	5	2.991 DIA. X 2.50	STEEL 4140	RC-34	13	3.25 X 2.8
SIST384-002	5	1	Cylinder B	4	6	3.840 DIA. X 21.5	STEEL 4140	RC-32	14	4.0 X 21.8
SIST384-006	6	1	Cylinder Head	4	7	3.812 DIA. X 4.945	STEEL 4140	RC-32	15	4.0 X 5.3
SIST384-007	7	1	Setting Mandrel	4	8	1.995 DIA. X 19.58	STEEL 4140	RC-35	16	2.25 X 20
SIST384-008	8	1	Piston Rod	4	9	1.214 DIA. X 21.875	STEEL 4140/4340	RC-38	17	1.5 X 22.25
SIST384-009	9	1	Cross Link Retaining Ring	4	10	3.812 DIA. X 1.382	STEEL 4140	RC-28	18	4.0 X 1.75
SIST384-010	10	1	Cross Link Sleeve	4	11	3.812 DIA. X 10.00	STEEL 4140	RC-35	19	4.0 X 10.35
SIST384-011	11	1	Flowing Piston	4	12	2.990 DIA. X 3.06	STEEL 4140	RC-26	20	3.25 X 3.4
SIST384-012	12	1	Bleeder Disk		13	1.150 DIA. X .265	STEEL 1018		21	1.25 X .63
SIST384-013	13	1	Cross Link	4	14	.370 X 2.00 X 3.800	STEEL 300M	RC-33	22	.375 X 2.25 X 4.0
SIST384-014	14	1	Disk Retainer		15	1.250 DIA. X .625	304 SS		23	1.5 X .9
SIST384-015	15	1	Nylon Plug-Retainer		16	.560 DIA. X .617	POLYETHYLENE		24	.625 X .9
SIST384-016	16	1	O-RING-Bleeder		17	.915 ID X .139	PARKER: 2-213/N1490		25	
SIST384-017	17	1	Retaining Pin			3/8-16UNC X 1.76	GRADE 8+		26	
SIST384-018	18	1	Set Screw-Cylinder Head			3/8-16UNC X 1/2	GRADE 8+		27	
SIST384-019	19	1	Set Screw-Cross Link			1/4-20UNC X 3/8	GRADE 8+		28	
SIST384-020	20	14	O-RING-External			2.625 ID X .213	PARKER: 2-334/N1490		29	
SIST384-021	21	2	O-RING-Cylinder Head			1.125 ID X .139	PARKER: 2-216/N1490		30	